



February 2024 Newsletter

www.coastalquilters.org.nz

E: coastal.quilters@gmail.com



President's Piece

Sheila Christensen gave us an interesting tour of The Festival of Quilts at Birmingham from when she visited last year. She showed pictures of quilts from winners in previous years, those quilts were stunning. While the close-up might have showed some very tiny or intricate piecing, these were just a fraction of the whole quilt (which all looked to be about king size!). There were other quilts where the colours just glowed. Does this inspire you to put an entry into our Symposium this year?

Sheila taught at the Festival and we saw the resulting triangles that her students had made. She also showed some of her quilts and it was lovely to see these in real life rather than a picture in one of her books. Sheila also talked about the new ventures at the 'shop' now it is closed to retail customers but open for classes (in the shop) or online through zoom.

The year is whizzing by, this is the second newsletter of the new year so it is only a few more months until our AGM in July. This year our Treasurer (Alison Tierney) will have to step down as, according to our Constitution, the Treasurer can only serve for 3 years. Obviously this is a vital position for our group, so please contact Alison if you are interested in what this involves. I know that she has streamlined the processes to make it as easy as possible.

There will be others coming off the Committee this year so please consider if you can spare one evening a month (about 1 ½ hours) for a meeting. Our group have Committee members covering a wide geographical area. This year we are moving into the modern world with holding the meetings online. While it is lovely to meet face to face, I'm hoping that during the winter months especially we can limit travelling and have Committee members meet in two or three more local venues. So, a bit of a compromise between the two styles of meetings.

Thank you to those who made neonate quilts in memory of Ann Scannell. Our next meeting is the last one where we will be collecting them so please get them finished and bring them along in March.

Nicky

President

Next Sit and Stitch

Saturday, 24 February 2024

St Andrews Church Hall

Next Club Day

9 March, 1.30pm start

Doors Open 12.45 pm

Speaker: Toni Downes

Inside this issue:

President's Piece	1
Quilts for Neonates	1
Speakers	2
Retreats	2
Gift Quilts	3
Library	3
Classes	4
Meeting Roster & Duties	4
Notices	6
Committee	7
Show and Tell	9
Retreats Registration Form	10
Events Calendar 2024	11
BOM Instructions	12



Quilts for Neonates

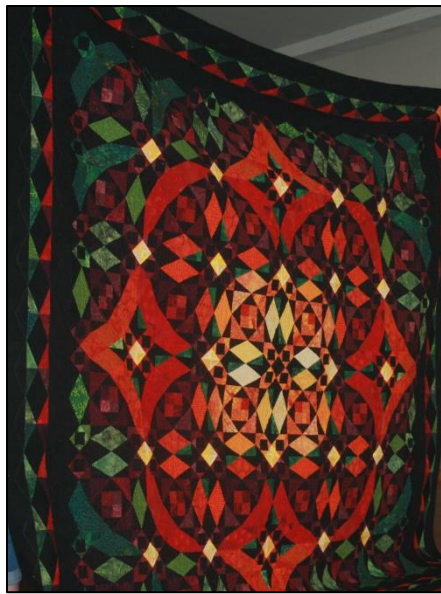
Measurements should be:

24 inches x 26 inches

and no black or red should be included (as predominant colours)

but anything close to that size is appreciated.

Collections at February and March meetings.



A selection of Sheila's quilts.



Some neonate quilts – hopefully more will come in next month.



2024 Speakers

- March:** Tina Downes – NZ Rugby Museum speaking about embroidery of All Black jumpers.
April: tba – Please note that Clare Smith and Lisa Avery talk about their Japan visit has been deferred.

About Tina Downes

Is a Massey University textile expert. She will be talking about how she painstakingly researched century-old knitting techniques in order to recreate handwoven wool replicas of the 1905 Original All Black jersey. Eleven were made by Tina to raise money for the New Zealand Rugby Museum in Palmerston North. She is also able to bring along some jerseys for display.

Retreats

Just a reminder about Coastal Quilters Silverstream Retreat from April 5th to April 7th. So far 10 people have either forwarded their registration form to cqretreats@gmail.com or handed their form to me at our last meeting. There is still time to register as we do need more than 10 people to attend. If you have never been to a Silverstream Retreat make this one your first and enjoy a whole weekend without any family interruptions, no cooking, no cleaning what a weekend to enjoy just you and your projects please come and have a go. *Hannie*

MARK THESE DATES IN YOUR DIARIES

2024 Full Retreats	5-7 April 2024 – Silverstream
	30 August – 1 September 2024
2024 Mini Retreats	26-27 July 2024
	22-23 November 2024
2025 Full Retreats	4-6 April 2025
	5-7 September 2025

Gift Quilts

Welcome back to another year of Gift Quilts! I hope, like me, you were able to enjoy some fun this summer, whether that included stitching or other activities that are good for your mental wellbeing. I was fortunate to be able to do both, and even took away a sewing machine at Christmas time.

Thank you to those who continue to donate items for Gift quilts. It is all very much appreciated. At the February meeting, we were donated a whole quilt kit. (Thanks, Beverley!) If you feel like a decent project with all the fabric and good instructions to follow, please let me know.

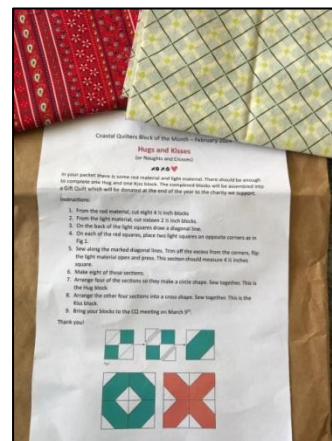
Thanks also to those who have taken quilts to bind, and material bundles to put together. Please let me know if you would like to quilt any of the many tops we have. This is a great way to practise your free-motion skills, or just keep it simple with straight line quilting.

I was thrilled with the participation in the Gift Quilt Block of the Month, Hugs and Kisses for February. It will be great to see the finished blocks and how they all go together. The instructions will be sent with the newsletter for your future reference. I will have another GQ BOM for March. More details at the meeting.

Lastly, we have been able to book a Gift Quilt Workday for 2024. The date will be Saturday, 29 June. This is Matariki weekend. We will have more information about how the workday runs closer to the time.

Thank you again for your generosity with your time, skills and resources to help us support our charities, Whare Manaaki Porirua Women and Family Centre and Te Whare Tiaki Wahine Refuge.

Alison Spurdle
027 306 2822



Instructions included later



A couple of gift quilts recently handed in.

Library

Don't forget to bring back any library books you may have had over the last couple of months. Maree Le Comte is our new Librarian, feel free to have a chat if there is anything in particular you are after. There will be new magazines available at our March meeting. February's new additions to the library were:

- Simply Stitched book
- 2x Quiltmania magazine
- 1x Simply Vintage magazine

Classes 2024

Class Date	Class Name	Description	Payment Code
16 th March	Dresden Plate Table Runner – With Di Barnden	Di will be teaching how to cut the pieces out then how to assemble them into the finished product.	Dresden
13 April and 18 May (changed date) 9:00 – 12:00	English Paper Piecing – With Marge Hurst	This hand class will teach the basics of putting together various shaped pieces and relevant stitches to use. You will have homework between classes so that you will have a finished small quilt or table runner upon completion. These classes will be held before our regular Club Days.	EPP
20 th April	Floor Mat – With Jenny Hunter (Plume Levin)	Jenny owns Plume in Levin. She is coming down to teach us how to make her Floor Mat. The mat is 48" or 23cm in diameter, so is a good project to use up some of those larger pieces hidden away in your stash.	FlrMat
11 May 10.30 start	Beginners Class – Lynette from Cherry Pie Levin	We have been asked by members to run this class, so that we can hopefully get some new members to enjoy what our Club has to offer. Class will be held at the Plimmerton Pavilion in the Supper Room on the same day as our Club Work Day. Lynette Corlis owns Cherry Pie in Levin (a regular stop on our yearly Bus Trip). She will be teaching a simple Table Runner and will bring a range of kits to purchase for the course. Grab a friend and they can attend the class while you are at the work day and catch up for lunch. More Details to follow.	Beginner
15 th June	Finish it Up – Di Barnden	Get those UFO's into the daylight and get them moving. Di will be on hand as always to help, advise and get you back on track. Always a fun day.	FinUp

If you have any suggestions of classes that you would like to do, please talk to Nicola Drake (email l.n.drake@xtra.co.nz) or put a note in the suggestion box which is on the sign-in table on meeting days.

Occasionally a class will have an additional cost for equipment or materials.

- Your place in class is not secured until you pay. Please ensure you register and pay and do not just turn up on the day.
- All classes start at **9.30am (unless otherwise stated)** and are held at the St Andrews Church Hall, Steyne Avenue, Plimmerton unless stated otherwise. Please arrive early to set up your machines etc.
- **It is important we each remember to help clear up our own area (table away & floor clean) before leaving – we are all volunteers!**
- Please be mindful that attendance at any of our classes is for those members who have enrolled and paid to attend. Turning up without enrolment or popping in puts extra pressure on our limited space, time and tutors. Thank you.

When paying online, use the club's bank account BNZ - 02 0524 0056822 00 and please remember to include your name and the Payment Reference for the class you are doing. Classes are \$40.00 for members and \$55.00 for non members.

Meeting Duties

Thank you to everyone for continuing to help out with duties at our Club Day. Our pool of members able to contribute, especially with heavy lifting, is limited so we really appreciate your offers to help on the day, even though you may not have been down for any duty.

March 2024		April 2024	
Hall:	Lindy Mckeown	Hall:	Gayle Carmichael
Kitchen:	Raewyn French Jean Grant	Kitchen:	Lynne Kennedy Dianna Lacy
Sales:	Jean Corin Verena Coleman Denise Field Prue Cooke-Willis	Sales:	Jean Corin Verena Coleman Denise Field Prue Cooke-Willis
Raffles	Raewyn Hill	Raffles	Lorraine Jones
Quilt Holders:	Judith Havill Sue Haynes	Quilt Holders	Georgina Shann Alison Spurdle
Frames	Alz and Janine Armstrong	Frames	Alz and Janine Armstrong
Library:	Mary Hutchinson	Library:	Marilyn Piercy

Helper Duties (All helpers to arrive by 12.45 pm)

If you are new to helping out with duties, the following is a simple version of what is expected. If you are unable to do your duty please contact a committee person.

Hall	Please arrive by 12.45 to help put out chairs in the hall and at the end of meeting help stack any unreturned chairs to back of hall.
Kitchen	Simone brings milk, biscuits and cups etc. Prior to start of meeting, you need to put out cups, biscuits, coffee, milk in jug, make sure zip is boiled and teabags put in pot ready for the tea break. Help pour tea during break and afterwards wash up any cups and tidy up kitchen area.
Sales	A committee person will direct you as to what is required eg put out fabrics, books etc on sales tables, take in sales and after afternoon tea help pack up and count all money taken in.
Raffles	Sit at raffles table and sell raffles! At end of afternoon tea, count up money taken which is then given to Alison Tierney (Treasurer)
Library	Maree and librarian helpers will give you a container of pens and as books are taken out, members name and date of return are written on library book cards. (Return date of books is the month following). Cards to be put in numerical order in container and given back to Library Helpers at end of break.

Helpers:

Jean Corin, Denise Field, Verena Coleman (Sales Table), Simone Etheredge (Chief Tea Lady), Maree Le Comte, Louise Shirkey, Judy Elliot (Library), Prue Cooke-Willis (Club Membership), Alison Spurdle and Prue Cooke-Willis (Gift Quilts), Lesley Hall (Mini-retreat, Sit 'N' Stitch), Alz and Janine Armstrong (Frames & Photos), Rachel-Mary Perry (Almoner), Angela Ambler (Greeter) .

Classes: Nicola Drake

Membership:

Prue Cooke-Willis 027 337 3493 Email: prudencecw@gmail.com

Rachel-Mary Perry is our Club Almoner. Please contact Rachel-Mary on 021 1705 151 or email rmperry1943@gmail.com if you know of someone coping with an illness or bereavement.

SYMPOSIUM 2024 REGISTRATIONS ARE OPEN



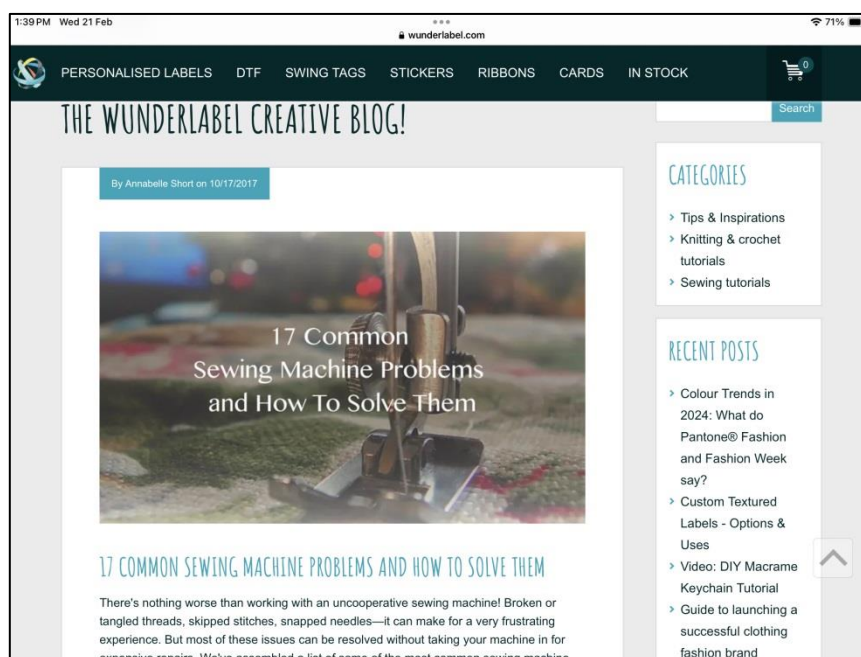
Tutors have now been announced for the Symposium – looks very exciting.

Not too late to register - for more information and to register for this awesome event in October 2024 go to www.quiltsymposium.com

Members might find the following interesting:

- **YouTube: The Surprising Genius of Sewing Machines** made by Ventasium in November 2023. It covers the history and how the sewing machine actually works.
- **And another link from Quilting Digest for 17 Common Sewing Machine Problems and How to Solve Them** by Annabelle Short :

<https://wunderlabel.com/en-gb/blog/17-common-sewing-machine-problems-solve/>



2023/2024 Committee

A reminder about our Committee contact and roles below. If you're ever interested in finding out more or joining the committee please feel free to contact any one of us. We are a small group and always welcome new members on board.



Nicky Gardner	President	04 232 2805
Gayle Carmichael	Past President	027 602 7888
Lindy McKeown	Newsletter Editor	021 2800 315
Alison Tierney	Treasurer	04 904 4105
Alison Spurdle	Gift Quilts Coordinator	027 306 2822
Hannie Van Cruchten	Retreats	021 033 8070
Georgina Shann	Secretary	021 027 26225
Nicola Drake	Classes	021 396 473
Vacancy	Block of the Month	
Off Committee Roles		
Maree Le Comte	Librarian	04 232 4425
Prue Cooke-Willis	Membership and Gift Quilts	027 337 3493

Coastal Quilters Bank Account Number

Payment of classes, retreats, subs, bus trips etc, please include your surname and the reason for payment eg subs, Bus trip, class name (payment reference)

BNZ - 02 0524 0056822 00

Have you changed your address – snail or email?

If so, please let Prue (prudencecw@gmail.com) know so she can update lists and keep you in touch with Coastal Quilters.

SUGGESTIONS OR CONTRIBUTIONS?

Have you any ideas for a class, project, book or speaker? Please speak with one of our committee or put your ideas into the Suggestion Box on the table in the front foyer. We welcome any suggestions.

Quilts, Quilts, Quilts

Hawke's Bay Patchworkers and Quilters
Biennial Exhibition

Taradale Town Hall
14th - 16th May
Thursday to Saturday
9 am - 5 pm
\$5



News Flash!

The Great NZ Quilt Show 2025
will be held in
CHRISTCHURCH
May 16-18

After much thought, we have decided that the South Island needs some quiltly love.
Further details will be released soon!



*Feilding Kowhai
Patchwork Quilters*



QUILTS @ THE COACH HOUSE

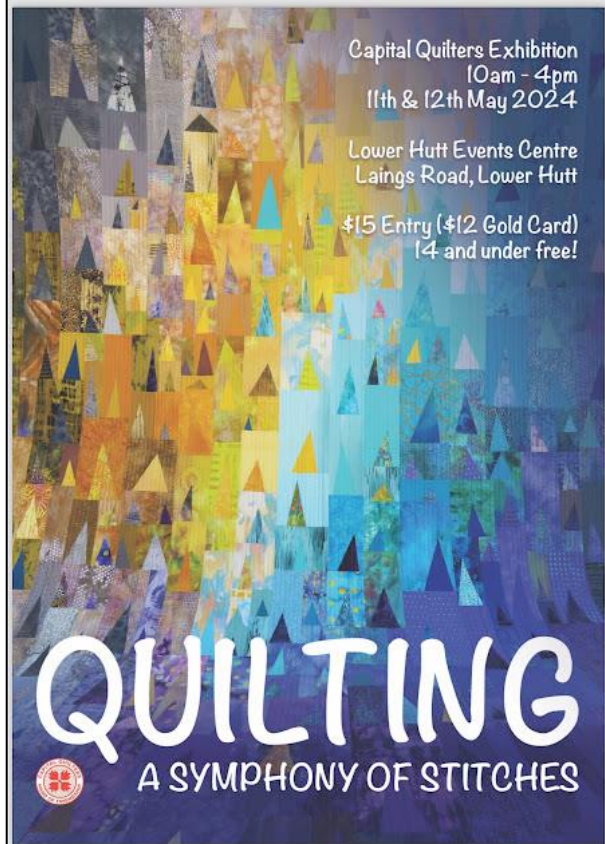
15 - 17 MARCH 2024
10am - 4pm daily

Merchants Mall
Guest Exhibitor
Aotearoa Quilters Challenge - Light it Up
Refreshments Available
Additional Lighting Installed

Admission \$5
Includes Coach House Entry
Students Free



The Coach House Museum
127 South Street, Feilding
Car of Kawakawa Road &
South Street
Disabled access & toilet facilities
Large free parking area


Capital Quilters Exhibition
10am - 4pm
11th & 12th May 2024

Lower Hutt Events Centre
Laings Road, Lower Hutt

\$15 Entry (\$12 Gold Card)
14 and under free!

QUILTING

A SYMPHONY OF STITCHES



QUILTmania 159

Le Magazine du Patchwork



Quilt made by Sheryl Anicich from Capital Quilters recently made the cover of Quiltmania. Congratulations Sheryl.

Show and Tell



1



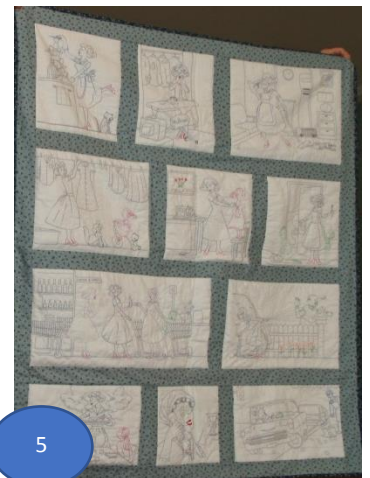
2



3



4



5



6

- 1 & 2. Rachel-Mary Perry - Hexagons
- 3. Marilyn Piercy- Placemats
- 4. Nicky Gardner- Stars
- 5. Alz Amrstrong - Smee Designs
- 6. Patricia Fouhy – for No. 12 grandchild
- 7. Alison Spurdle
- 8. Lisa Avery
- 9. Raewyn Hill
- 10. Marge Hurst – cushion, mathematical shapes



7



8



9



10



Coastal Quilters



SILVERSTREAM RETREAT REGISTRATION FORM

Friday 5th April to Sunday 7th April 2024

Silverstream Retreat, 3 Reynolds Bach Drive, Silverstream, Lower Hutt.
For details on how to get there, see their website - www.staywithus.co.nz.

Please note: accommodation is shared rooms

Name: _____

Phone: _____

Email: _____

Please select your attendance option by deleting those that do not apply -

Friday 2pm – Sunday 3pm	Cost - \$200.00	___	Non-Members - \$210.00
Saturday only – lunch	Cost - \$30.00	___	Non-Members - \$35.00
Saturday only - lunch & dinner.	Cost - \$57.00	___	Non-Members - \$62.00

Dietary Requirements:

Gluten free, Vegetarian or other dietary requirements, require an extra charge of **\$7.70 per day per person**. Please give full details of any dietary requirements -

Payment Details

Payment \$ _____ Date _____ Bank a/c 02-0524-0056822-00.

Please remember to include your name and 'retreat' in the payment details.

Refunds may be considered on a case by case basis. There is a non-refundable deposit of \$20.00.

PAYMENT IN FULL IS REQUIRED BY WEDNESDAY 20 March 2024

Name of person to be contacted in case of emergency:

Name: _____ Mobile: _____

Please email your completed form to cqretreats@gmail.com

Coastal Quilters Events Calendar 2024		
March	9	Club Meeting – Speaker: Tina Downes, NZ Rugby Museum
	9 March – 7 July	Boro Exhibition, Art Gallery at Te Manawa, Palmerston North
	14-16	Hawke's Bay Patchwork Quilters Biennial Exhibition, Taradale Town Hall – 9.00am to 4.00pm \$5.00 entry
	15-17	Feilding Kowhai Patchwork Club – Quilts at the Coach House Museum, 10.00am -4.00pm Entry \$5.00
	16	Class: Dresden Plate Table Runner, Di Barnden
April	5-7	Full Retreat, Silverstream
	13	Club Meeting – Speaker: Clare Smith and Lisa Avery
	13	Class: English Paper Piecing, Marge Hurst
	20	Class: Floor Mat, Jenny Hunter (Plume, Levin)
May	11	Club Work Day
	11	Class: Beginners, Lynette (Cherry Pie, Levin)
	11-12	Capital Quilters Exhibition, Lower Hutt Events Centre 10.00 – 4.00 am Entry \$15 (\$12 Gold Card)
	18	Class: English Paper Piecing, Marge Hurst
June	8	Club Meeting
	15	Class: Finish It Up, Di Barnden
	29	Gift Quilt Workday
July	6	Club Meeting (AGM) (Please note this is a week earlier than our normal monthly meeting)
	26-27	Mini Retreat
August	10	Club Meeting
Aug-Sept	30-1 Sept	Full Retreat, Silverstream
September	14	Club Meeting
October	2-6	Quilt Symposium – Cambridge High School – Registrations open
	9	Club Work Day
November	9	Club Day
	22-23	Mini Retreat
December	14	Christmas Meeting
Coastal Quilters Events Calendar 2025		
April	4-6	Full Retreat, Silverstream
May	16-18	The Great NZ Quilt Show 2025, Christchurch
September	5-7	Full Retreat, Silverstream

Coastal Quilters Block of the Month – February 2024

Hugs and Kisses

(or Noughts and Crosses)



In your packet there is some red material and light material. There should be enough to complete one Hug and one Kiss block. The completed blocks will be assembled into a Gift Quilt which will be donated at the end of the year to the charity we support.

Instructions:

1. From the red material, cut eight 4 ½ inch blocks
2. From the light material, cut sixteen 2 ½ inch blocks.
3. On the back of the light squares draw a diagonal line.
4. On each of the red squares, place two light squares on opposite corners as in Fig 1.
5. Sew along the marked diagonal lines. Trim off the excess from the corners, flip the light material open and press. This section should measure 4 ½ inches square.
6. Make eight of these sections.
7. Arrange four of the sections so they make a circle shape. Sew together. This is the Hug block.
8. Arrange the other four sections into a cross shape. Sew together. This is the Kiss block. Both blocks should measure 8 ½ inches square.
9. Bring your blocks to the CQ meeting on March 9th.

Thank you!

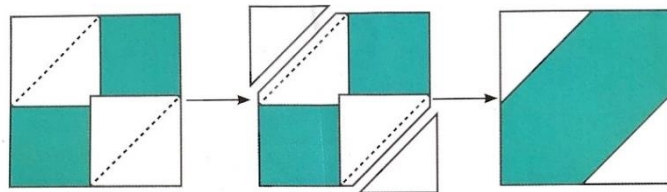
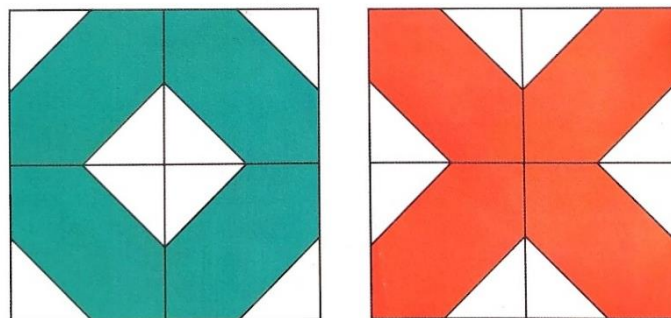


Fig 1



You'll find this pattern in Issue 99 of Love Patchwork and Quilting.